

WE SUPPORT YOU!

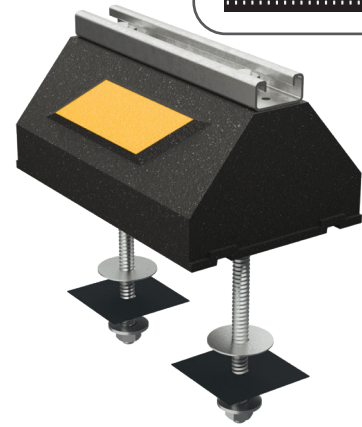
SCAN FOR V-SPEC
VIDEO SPECIFICATION



CZUDF SERIES

- CZUDF (Under Deck Fastening) Seismic/Wind Uplift Series
- Penetrating rooftop support fastened to the structure under the membrane
- Built for hurricane resistance or seismic applications
- Designed for gas and refrigeration piping, cable trays, electrical conduit, HVAC equipment, and multiple-line rooftop systems
- Accepts various straps and/or clamps (sold and supplied by others)
- Strut is available in corrosion-resistant galvanized steel, stainless steel, or aluminum

 CONSULT WITH A ROOFING CONSULTANT FOR ALLOWABLE LOADS.



**LIMITED
LIFETIME WARRANTY**

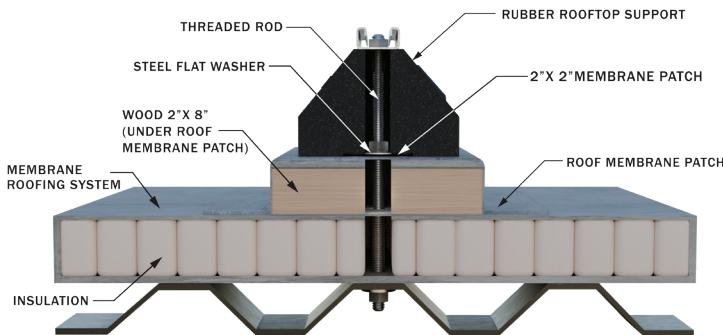
**MAY QUALIFY FOR
L.E.E.D CREDITS**

**RECOMMENDED SPACING:
REFER TO LOCAL CODE**



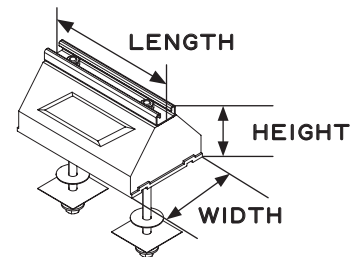
SKU	HEIGHT	WIDTH	LENGTH	WEIGHT	MAX. LOAD
CZUDF-10	4.8" (122MM)	6" (152MM)	9.5" (241MM)	7.2 LBS	800 LBS PER 9.5" LENGTH
CZUDF-20	4.8" (122MM)	6" (152MM)	19.3" (490MM)	12.9 LBS	
CZUDF-30	4.8" (122MM)	6" (152MM)	29" (737MM)	18.7 LBS	
CZUDF-40	4.8" (122MM)	6" (152MM)	38.8" (986MM)	24.4 LBS	

Note: All measurements may vary by +/- 3%. Not seismic tested or approved.



MATERIALS

- BASE (C-PORT CXP): 100% RECYCLED RUBBER, UV RESISTANT
- STRUT: 14-GAUGE GALVANIZED STEEL STRUT (13/16" HIGH)
- ROD: TWO 1/2"-13 ZINC-PLATED ALL-THREADED ROD



Clearline
TECHNOLOGIES

info@clearline.ca

1-866-444-0009

www.c-port.net