

WE SUPPORT YOU!

SCAN FOR V-SPEC
VIDEO SPECIFICATION

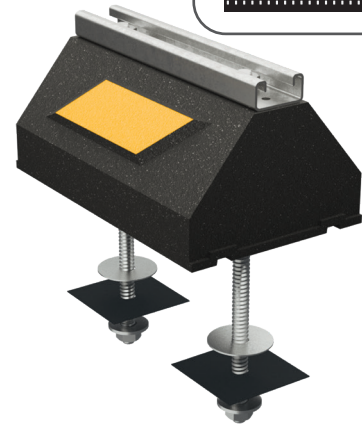


CZUDF SERIES

- CZUDF (Under Deck Fastening) Seismic/Wind Uplift Series
- Penetrating rooftop support fastened to the structure under the membrane
- Built for hurricane resistance or seismic applications
- Compatible with gas and refrigeration piping and HVAC equipment
- Strut is available in corrosion-resistant galvanized steel, stainless steel, or aluminum



CONSULT WITH A ROOFING CONSULTANT
FOR ALLOWABLE LOADS.



LIMITED
LIFETIME WARRANTY

MAY QUALIFY FOR
L.E.E.D CREDITS

RECOMMENDED SPACING:
REFER TO LOCAL CODE



SKU	HEIGHT	WIDTH	LENGTH	WEIGHT	MAX. LOAD
CZUDF-10	4.8" (122mm)	6" (152mm)	9.5" (241mm)	7.2 LBS	800 LBS PER 9.5" LENGTH
CZUDF-20	4.8" (122mm)	6" (152mm)	19.3" (490mm)	12.9 LBS	
CZUDF-30	4.8" (122mm)	6" (152mm)	29" (737mm)	18.7 LBS	
CZUDF-40	4.8" (122mm)	6" (152mm)	38.8" (986mm)	24.4 LBS	

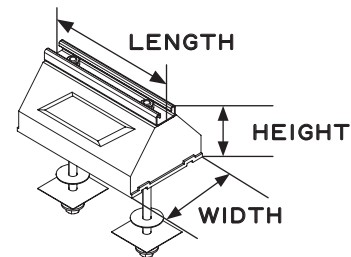
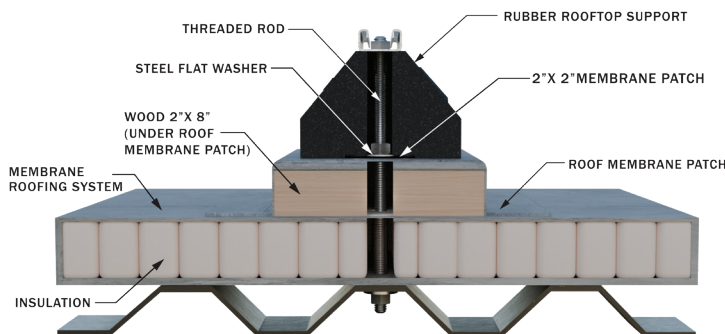
Note: All measurements may vary by +/- 3%. Not seismic tested or approved.

MATERIALS

BASE (C-PORT CXP): 100% RECYCLED RUBBER, UV RESISTANT

STRUT: 14-GAUGE GALVANIZED STEEL STRUT (13/16" HIGH)

ROD: TWO 1/2"-13 ZINC-PLATED ALL-THREADED ROD



info@clearline.ca 1-866-444-0009 www.c-port.net

Revision Date: 01/2026