

YOUR ROOFTOP SUPPORT SOLUTION

C-Ports provide innovative, economical support systems for Gas and Refrigeration Pipes, Electrical Conduit, Ducting, Roof Walkways, Air Conditioning, HVAC and Solar Racking.

WWW.C-PORT.NET

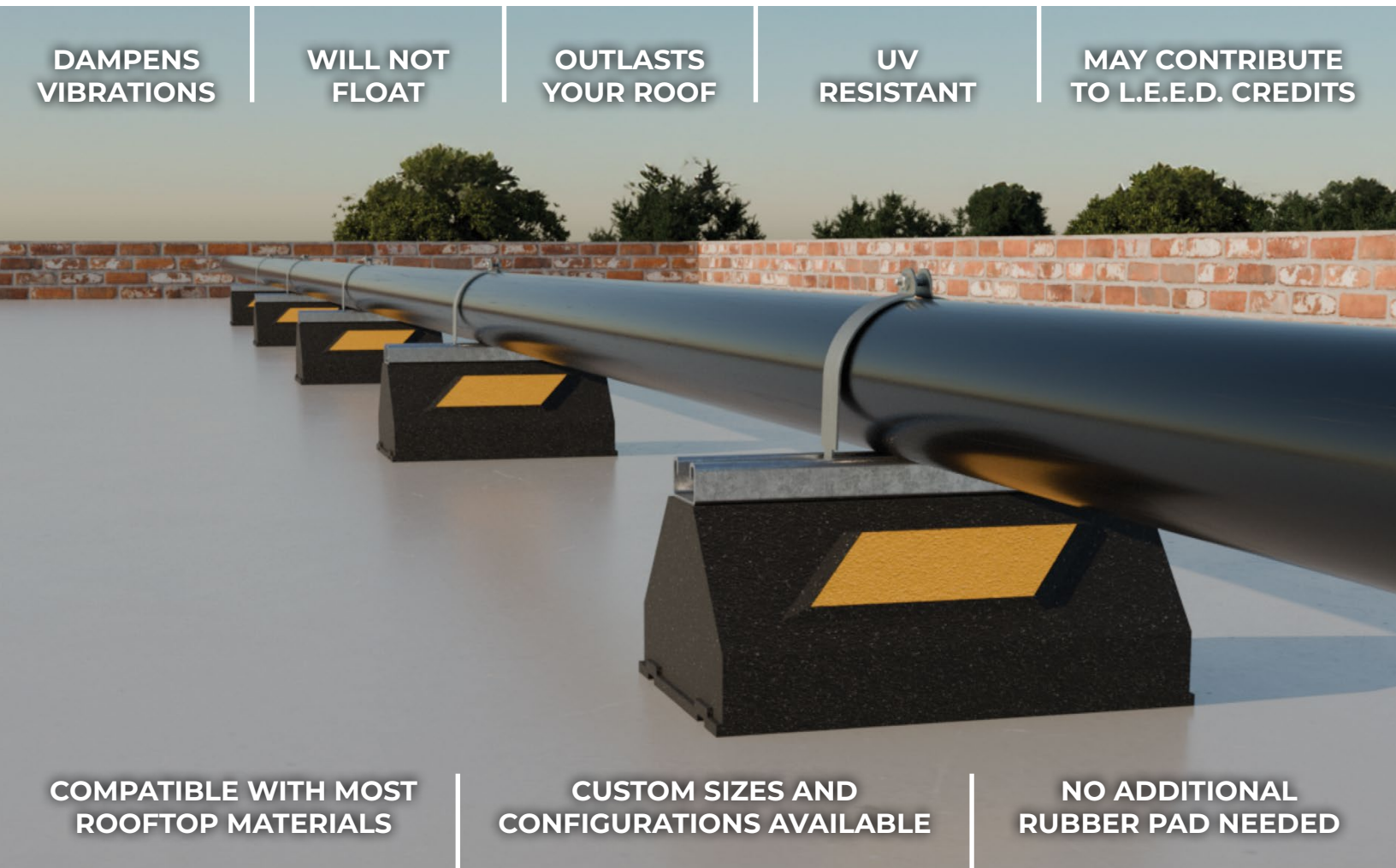
**DAMPENS
VIBRATIONS**

**WILL NOT
FLOAT**

**OUTLASTS
YOUR ROOF**

**UV
RESISTANT**

**MAY CONTRIBUTE
TO L.E.E.D. CREDITS**



**COMPATIBLE WITH MOST
ROOFTOP MATERIALS**

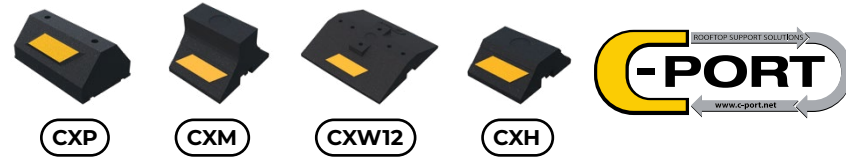
**CUSTOM SIZES AND
CONFIGURATIONS AVAILABLE**

**NO ADDITIONAL
RUBBER PAD NEEDED**

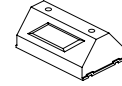
**Phone: 1.204.786.3334
Toll Free: 1.866.444.0009**



**MADE WITH
100%
RECYCLED RUBBER**



CXP SERIES



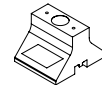
SKU	HEIGHT	WIDTH	LENGTH	WEIGHT
CXP	4" (102MM)	6" (152MM)	9.5" (241MM)	4.8 LBS
CXP2	4" (102MM)	6" (152MM)	19.3" (490MM)	9.7 LBS

CXP SERIES

C-Port's CXP Series is designed for economical support of all types of conduit, pipes, and hundreds of other applications. The C-Port is UV resistant and suitable for many types of roofing material or other flat surfaces.

This 100% recycled material effectively accepts screw fasteners for attaching one or two hole straps or clamps (sold separately).
CXP Series Max. Load: 500 LBS per 9.5" length.

CXM SERIES



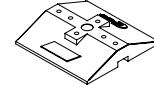
SKU	HEIGHT	WIDTH	LENGTH	WEIGHT
CXM	4" (102MM)	6" (152MM)	5" (127MM)	2.3 LBS
CXM20	4" (102MM)	6" (152MM)	10" (254MM)	4.7 LBS

CXM SERIES

C-Port's CXM and CXM20 is perfect for conduit and small piping. Often used in solar, telecom, and many other areas. The 100% recycled rubber will outlast your roof.

CXM Max. Load: 200 LBS.
CXM20 Max. Load: 400 LBS.

CXW SERIES



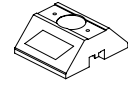
SKU	HEIGHT	WIDTH	LENGTH	WEIGHT
CXW12	2.5" (64MM)	12" (305MM)	12" (305MM)	9.2 LBS
CXW24	2.5" (64MM)	12" (305MM)	24" (610MM)	18.4 LBS
CXW36	2.5" (64MM)	12" (305MM)	36" (914MM)	27.6 LBS
CXW48	2.5" (64MM)	12" (305MM)	48" (1219MM)	36.7 LBS
CXW60	2.5" (64MM)	12" (305MM)	60" (1524MM)	45.9 LBS
CXW72	2.5" (64MM)	12" (305MM)	72" (1829MM)	55.1 LBS

CXW SERIES

C-Port's CXW Series is an economical support of heavier-weight conduit and piping, as well as any other heavy duty applications. As with the CXP, the CXW is suitable for many types of roofing material or other flat surfaces.

The 100% recycled material effectively accepts screw fasteners for securing one or two hole straps or clamps (sold separately).
CXW Series Max. Load: 1000 LBS per 12" length.

CXH SERIES



SKU	HEIGHT	WIDTH	LENGTH	WEIGHT
CXH	2.3" (58MM)	6" (152MM)	5" (127MM)	1.9 LBS

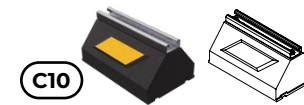
CXH SERIES

C-Port's CXH model is the most economic and the smallest of the C-Port line, perfect for conduit and small piping. As with the CXM, it is often used in solar, telecom, and many other applications.
CXH Max. Load: 300 LBS.

Note: All measurements may vary by +/- 3%



C SERIES



SKU	HEIGHT	WIDTH	LENGTH	WEIGHT
CH5	3" (76MM)	6" (152MM)	5" (127MM)	2.3 LBS
C5	4.8" (122MM)	6" (152MM)	5" (127MM)	2.8 LBS
C10	4.8" (122MM)	6" (152MM)	9.5" (241MM)	5.6 LBS
C20	4.8" (122MM)	6" (152MM)	19.3" (490MM)	11.5 LBS
C30	4.8" (122MM)	6" (152MM)	29" (737MM)	17.4 LBS
C40	4.8" (122MM)	6" (152MM)	38.8" (986MM)	23.2 LBS
C48	4.8" (122MM)	6" (152MM)	48.5" (1232MM)	29 LBS

C SERIES

The best selling C-Port, the C Series channel support is designed for superior support of gas and refrigeration piping systems, cable tray, electrical conduit, multiple lines, HVAC equipment and hundreds of other applications. It's available in any length as a roof curb (sleeper) replacement.

CH5 and C5 Max. Load: 300 LBS.

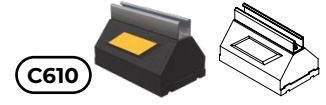
C Series Max. Load: 800 LBS per 9.5" length.

Available in corrosion-resistant stainless steel or aluminum.

Note: CH5 comes on our CXH and the C5 comes on our CXM base.

Note: All measurements may vary by +/- 3%

C500 & C600 SERIES



SKU	HEIGHT	WIDTH	LENGTH	WEIGHT
C510	5.6" (142MM)	6" (152MM)	9.5" (241MM)	6.3 LBS
C520	5.6" (142MM)	6" (152MM)	19.3" (490MM)	12.9 LBS
C530	5.6" (142MM)	6" (152MM)	29" (737MM)	19.4 LBS
C540	5.6" (142MM)	6" (152MM)	38.8" (986MM)	26 LBS
C548	5.6" (142MM)	6" (152MM)	48.5" (1232MM)	32.5 LBS
C610	6.1" (155MM)	6" (152MM)	9.5" (241MM)	7.2 LBS
C620	6.1" (155MM)	6" (152MM)	19.3" (490MM)	15.5 LBS
C630	6.1" (155MM)	6" (152MM)	29" (737MM)	23.2 LBS
C640	6.1" (155MM)	6" (152MM)	38.8" (986MM)	31 LBS
C648	6.1" (155MM)	6" (152MM)	48.5" (1232MM)	38.9 LBS

C510 & C610 SERIES

The C510 & C610 Series provide additional height beyond the C Series to meet various building codes. Just like the C Series, they are designed for support of gas and refrigeration piping systems, cable tray, electrical conduit, multiple lines, HVAC equipment and hundreds of other applications.

C510 and C610 Series Max. Load: 800 LBS per 9.5" length.

Available in corrosion-resistant stainless steel or aluminum.

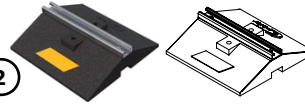


WWW.C-PORT.NET
**WIDEBODY
SERIES**



CW SERIES

CW12



SKU	HEIGHT	WIDTH	LENGTH	WEIGHT
CW12	3.3" (84MM)	12" (305MM)	12" (305MM)	10.4 LBS
CW24	3.3" (84MM)	12" (305MM)	24" (610MM)	20.6 LBS
CW36	3.3" (84MM)	12" (305MM)	36" (914MM)	31.3 LBS
CW48	3.3" (84MM)	12" (305MM)	48" (1219MM)	41.2 LBS
CW60	3.3" (84MM)	12" (305MM)	60" (1524MM)	51.5 LBS
CW72	3.3" (84MM)	12" (305MM)	72" (1829MM)	61.8 LBS

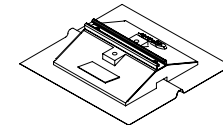
CW SERIES

The CW Series is our economical wide body channel support. It offers additional stability and load-bearing capacity over our C Series. The CW Series is designed to support gas and refrigeration piping systems, cable trays, electrical conduit, or hundreds of other applications.

CW Series Max. Load: 1400 LBS per 12" length.



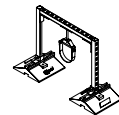
CGW GASKET SERIES



SKU	HEIGHT	C-PORT WIDTH	C-PORT LENGTH	MAT WIDTH	MAT LENGTH	WEIGHT
CGW12	3.3" (84MM)	12" (305MM)	12" (305MM)	17" (432MM)	18" (457MM)	10.8 LBS
CGW24	3.3" (84MM)	12" (305MM)	24" (610MM)	17" (432MM)	30" (762MM)	21.4 LBS
CGW36	3.3" (84MM)	12" (305MM)	36" (914MM)	17" (432MM)	42" (1067MM)	32 LBS
CGW48	3.3" (84MM)	12" (305MM)	48" (1219MM)	17" (432MM)	54" (1372MM)	42.7 LBS

CESW SERIES

SKU	HEIGHT	CROSSBAR WIDTH	BASE WIDTH	BASE LENGTH	WEIGHT
CESW12-2424	24" (610MM)	24" (610MM)	12" (305MM)	12" (305MM)	35.3 LBS
CESW12-3624	36" (914MM)	24" (610MM)	12" (305MM)	12" (305MM)	38.9 LBS
CESW12-4824	48" (1219MM)	24" (610MM)	12" (305MM)	12" (305MM)	45.6 LBS
CESW24-2424	24" (610MM)	24" (610MM)	12" (305MM)	12" (305MM)	56.6 LBS
CESW24-3624	36" (914MM)	24" (610MM)	12" (305MM)	12" (305MM)	59.9 LBS
CESW24-4824	48" (1219MM)	24" (610MM)	12" (305MM)	12" (305MM)	63.4 LBS



CGW12



Gasket Membrane (TPO, EPDM, or PVC)

CESW12-2424



CGW GASKET SERIES

The CGW Series is on our 12" x 12" low-profile wide body base, giving this support series superior stability and load-bearing capacity. The CGW can be glued down to the roof, and the mat provides an extra protective barrier between the rubber base and roof surface. These C-Ports come with your choice of a TPO (Thermoplastic-polyolefin), PVC (Polyvinyl chloride) or EPDM (ethylene propylene diene monomer) membrane. The CGW is designed for support of gas and refrigeration piping systems, cable tray, electrical conduit, multiple lines, HVAC equipment and many other applications.

CGW Series Max. Load: 1400 LBS per 12" length. Available in corrosion-resistant stainless steel or aluminum.

CESW SERIES

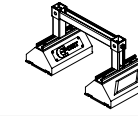
The CESW Series can support gas and refrigeration piping systems, cable tray, electrical conduit, multiple lines, HVAC equipment and many other applications. It is designed for rooftop applications requiring a heavier load bearing, and is suitable for most types of roofing material or other flat surfaces. The wide bases provide this series with added stability. The CESW Series is suitable for use with one or two pipe hangers (not included).

CESW Series Max. Concentrated Load: 700 LBS.

Note: All measurements may vary by +/- 3%

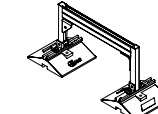
WWW.C-PORT.NET
EXTENSION SERIES

CES SERIES



SKU	HEIGHT	WIDTH	LENGTH	WEIGHT
CES10-1012	10.7" (272MM)	12" (305MM)	9.5" (241MM)	16.3 LBS
CES10-1024	10.7" (272MM)	24" (610MM)	9.5" (241MM)	18.2 LBS

CESHW SERIES



SKU	HEIGHT	WIDTH	LENGTH	WEIGHT
CESHW12-1624	16" (406MM)	24" (610MM)	12" (305MM)	38.4 LBS
CESHW12-1636	16" (406MM)	36" (914MM)	12" (305MM)	42.2 LBS

CES SERIES (Medium Load)

C-Port's CES (Medium Load) Series is designed to accommodate heavier loads and to provide additional height to gas and refrigeration piping systems, cable trays, electrical conduit, multiple lines, HVAC equipment and hundreds of other applications.

CES10-1012 Max. Load: 720 LBS.

CES10-1024 Max. Load: 360 LBS.

Available in corrosion-resistant stainless steel or aluminum.



CES10-1012

CESHW SERIES (Heavy Load)

C-Port's CESHW (Heavy Load) Series Support is designed as support for rooftop applications requiring a heavier load bearing.

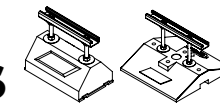
CESHW Series Max. Uniform Load: 2800 LBS.

Available in corrosion-resistant stainless steel or aluminum.



CESHW12-1624

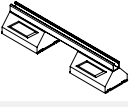
CE & CEW EXTENSION SERIES



SKU	HEIGHT	WIDTH	LENGTH	WEIGHT
CE10-8	8" (203MM)	6" (152MM)	9.5" (241MM)	6.6 LBS
CE10-12	12" (305MM)	6" (152MM)	9.5" (241MM)	7.1 LBS
CE10-16	16" (406MM)	6" (152MM)	9.5" (241MM)	7.5 LBS
CEW12-8	8" (203MM)	12" (305MM)	12" (305MM)	11.5 LBS
CEW12-12	12" (305MM)	12" (305MM)	12" (305MM)	11.9 LBS
CEW12-16	16" (406MM)	12" (305MM)	12" (305MM)	12.3 LBS
CEW12-24	24" (610MM)	12" (305MM)	12" (305MM)	13.2 LBS

WWW.C-PORT.NET
BRIDGE SERIES

CB BRIDGE SERIES



SKU	HEIGHT	WIDTH	LENGTH	WEIGHT
CB10-24	5.6" (142MM)	9.5" (241MM)	24" (610MM)	13.8 LBS
CB10-28	5.6" (142MM)	9.5" (241MM)	28" (711MM)	14.2 LBS
CB10-36	5.6" (142MM)	9.5" (241MM)	36" (914MM)	15.7 LBS
CB10-42	5.6" (142MM)	9.5" (241MM)	42" (1067MM)	16.6 LBS
CB10-50	5.6" (142MM)	9.5" (241MM)	50" (1270MM)	17.9 LBS
CB10-60	5.6" (142MM)	9.5" (241MM)	60" (1524MM)	19.5 LBS

CB BRIDGE SERIES

The CB Series is designed to support wider loads, such as ducts or cable trays. It's able to support multiple parallel gas and refrigeration piping or electrical conduit. By creating a bridge over a space, it allows for the support of piping and conduit on top of existing lines. The CB Series comes in multiple lengths to accommodate a wide range of existing pipes, conduit, ducts, and many others.

CB10-24, CB10-28, CB10-36, CB10-42 Max. Uniform Load: 1600 LBS.

CB10-50 Max. Uniform Load: 1300 LBS.

CB10-60 Max. Uniform Load: 1200 LBS.



CB10-12



Note: All measurements may vary by +/- 3%



CE & CEW EXTENSION SERIES

The CE & CEW Series channel support is designed as an extended support for gas and refrigeration piping systems, conduit and hundreds of other applications. The CE Series height is designed to be fully adjustable from 5" - 16"; and the CEW Series on our wide body base between 3.5" - 24". A wide range of pipe clamps and straps can be used with this support. This is an ideal solution for pipes requiring a slope.

CE Series Max. Load: 400 LBS.

CEW Series Max. Load: 800 LBS.

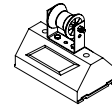
Available in corrosion-resistant stainless steel or aluminum.



CE10-8

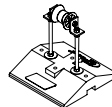


CR SERIES



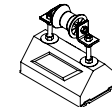
SKU	PIPE SIZE	MAX. HEIGHT TO ROLLER CENTRE	WIDTH	LENGTH	WEIGHT
CR10-3	UP TO 3"	7" (178MM)	6" (152MM)	9.5" (241MM)	5.9 LBS
CR10-4	3" TO 4"	7" (178MM)	6" (152MM)	9.5" (241MM)	6.2 LBS

CREW SERIES



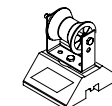
SKU	PIPE SIZE	MAX. HEIGHT TO ROLLER CENTRE	WIDTH	LENGTH	WEIGHT
CREW12-12-3	UP TO 3"	12" (305MM)	12" (305MM)	12" (305MM)	12.2 LBS
CREW12-12-4	3" TO 4"	12" (305MM)	12" (305MM)	12" (305MM)	12.2 LBS
CREW12-12-6	4" TO 6"	12" (305MM)	12" (305MM)	12" (305MM)	13.1 LBS
CREW12-16-3	UP TO 3"	16" (406MM)	12" (305MM)	12" (305MM)	12.6 LBS

CRE SERIES



SKU	PIPE SIZE	MAX. HEIGHT TO ROLLER CENTRE	WIDTH	LENGTH	WEIGHT
CRE10-8-3	UP TO 3"	8" (203MM)	6" (152MM)	9.5" (241MM)	7.2 LBS
CRE10-8-4	3" TO 4"	8" (203MM)	6" (152MM)	9.5" (241MM)	7.2 LBS
CRE10-12-3	UP TO 3"	12" (305MM)	6" (152MM)	9.5" (241MM)	7.6 LBS
CRE10-12-4	3" TO 4"	12" (305MM)	6" (152MM)	9.5" (241MM)	7.7 LBS

CRM SERIES



SKU	PIPE SIZE	MAX. HEIGHT TO ROLLER CENTRE	WIDTH	LENGTH	WEIGHT
CRM-3	UP TO 3"	5.2" (132MM)	6" (152MM)	5" (127MM)	2.9 LBS
CRM-4	3" TO 4"	5.2" (132MM)	6" (152MM)	5" (127MM)	3.1 LBS

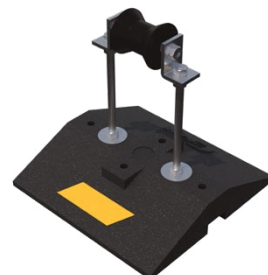
Note: All measurements may vary by +/- 3%



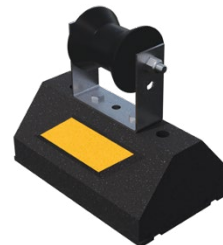
CRE10-8-3



CRM-3



CREW12-12-3



CR10-4

CR SERIES

The CR Series comes with a rubber roller to support gas and refrigeration pipes while allowing for small longitudinal movements. Its height to the roller centre is adjustable from 6" to 7" and suitable for most types of roofing material or other flat surfaces. Available with a 3" or 4" rubber roller.
 CR Series Max. Load: 500 LBS.

CREW SERIES

The CREW Series comes with a rubber roller to support gas and refrigeration pipes while allowing for small longitudinal movements. The wide body base provides additional stability and load-bearing capacity. With the extensions, the height is adjustable between 6" to 16" to the roller centre. Available with a 3" or 4" rubber roller.
 CREW12-12-3, CREW 2-12-4, CREW12-16-3 Max Load: 400 LBS.
 CREW12-12-6 Max. Load: 200 LBS

CRE SERIES

The CRE Series is designed for elevated support of gas and refrigeration pipes, and includes a rubber roller to allow for small longitudinal movements. With the extensions, the height is adjustable between 6.5" to 12" to the roller centre. Available with a 3" or 4" rubber roller.
 CRE Series Max. Load 400 LBS.

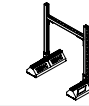
CRM SERIES

The CRM Series is our smallest C-Port to come with a rubber roller to support gas and refrigeration pipes while allowing for small longitudinal movements. The CRM provides a less expensive alternative to the larger roller C-Ports. It's ideal for smaller pipes, and its height to roller centre is adjustable from 4.2" to 5.2". Available with a 3" or 4" rubber roller.
 CRM Series Max. Load 300 LBS.



*All of the Roller Series are available with a 3" or 4" Rubber Roller.

DS & DSW DUCT SUPPORT SERIES



SKU	CROSSBEAM WIDTH	MAXIMUM CROSSBEAM HEIGHT	BASE LENGTH	WEIGHT
DS20-3624	24" (610MM)	36" (914MM)	19.3" (241MM)	44.2 LBS
DS20-3640	40" (1016MM)	36" (914MM)	19.3" (241MM)	46.6 LBS
DS20-4840	40" (1016MM)	48" (1219MM)	19.3" (241MM)	50.2 LBS
DSW24-3624	24" (610MM)	36" (914MM)	24" (610MM)	59.6 LBS
DSW24-3640	40" (1016MM)	36" (914MM)	24" (610MM)	62 LBS
DSW24-4840	40" (1016MM)	48" (1219MM)	24" (610MM)	65.6 LBS

DSA & DSAW DUCT SUPPORT SERIES



SKU	MINIMUM WIDTH	MAXIMUM WIDTH	BASE LENGTH	WEIGHT
DSA10-1831	18" (457MM)	31" (787MM)	9.5" (241MM)	34.3 LBS
DSA10-3157	31" (787MM)	57" (1448MM)	9.5" (241MM)	38.4 LBS
DSA10-57102	57" (1448MM)	102" (2591MM)	9.5" (241MM)	46.6 LBS
DSAW12-1831	18" (457MM)	31" (787MM)	12" (305MM)	43.9 LBS
DSAW12-3157	31" (787MM)	57" (1448MM)	12" (305MM)	48 LBS
DSAW12-57102	57" (1448MM)	102" (2591MM)	12" (305MM)	56.1 LBS

CS-VARI-ANGLE SERIES



SKU	HEIGHT	WIDTH	LENGTH	WEIGHT
CS10	5.6" (142MM)	6" (152MM)	9.5" (241MM)	7.4 LBS
CS20	5.6" (142MM)	6" (152MM)	19.3" (490MM)	13.9 LBS
CS30	5.6" (142MM)	6" (152MM)	29" (737MM)	20.3 LBS
CS40	5.6" (142MM)	6" (152MM)	38.8" (986MM)	26.8 LBS
CS48	5.6" (142MM)	6" (152MM)	48.5" (1232MM)	33.2 LBS

Note: All measurements may vary by +/- 3%

We now offer **LIFETIME WARRANTY** on all of our C-Port rubber products!



*Limited Warranty. Contact Clearline Technologies for further details.



DS & DSW DUCT SUPPORT SERIES

The DS & DSW Duct Support Series is designed specifically for HVAC ductwork. The fixed dimensions give the ability for quick install times. The DS Series is equipped with double CXP bases, and the DSW with double CXW bases to provide added support. Both series also come equipped with 4-hole 90-degree fittings for added crossbeam support and 8-hole wing fittings to connect the vertical struts to the C-Port bases.
 DS20-3624 & DSW24-3624 Max. Uniform Load: 1400 LBS.
 DS20-3640 & DSW24-3640 Max. Uniform Load: 850 LBS.
 DS20-4840 & DSW24-4840 Max. Uniform Load: 850 LBS.
 Available in corrosion-resistant stainless steel or aluminum.

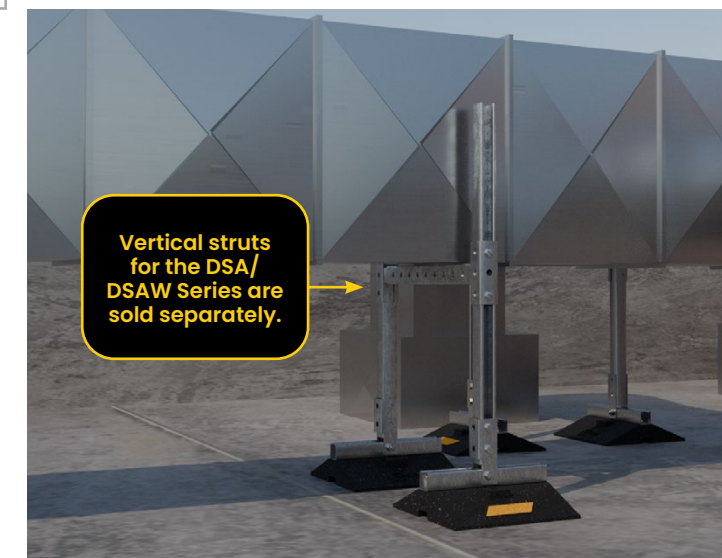
DSA & DSAW DUCT SUPPORT SERIES

The DSA & DSAW Duct Support Series are designed specifically for HVAC ductwork. The included telescopic cross-beam allows for easy size adjustments. The bases feature Vari-Angle C-Ports which adapt to any roof pitch and are made of 100% recycled rubber. These C-Ports can adhere to any roof membrane using approved adhesives (if required). The DSAW comes with a wide body base for added stability.
 DSA10-1831 Max. Uniform Load: 1250-1600 LBS.
 DSAW12-1831 Max. Uniform Load: 1250-2200 LBS.
 DSA10-3757 & DSAW12-3157 Max. Uniform Load: 750-1250 LBS.
 DSA10-57102 & DSAW12-57102 Max. Uniform Load: 380-750 LBS.
 Strut can be cut to suit on job site. Available in corrosion-resistant stainless steel or aluminum.
 Note: Vertical struts are sold separately.

CS-VARI-ANGLE SERIES



The patented CS-Vari-Angle Series support has variable angle support designed for ventilation duct, walkway systems, HVAC equipment and many other applications. It can be installed on sloped or uneven surfaces. Adapter leg will accommodate 1-5/8" x 1-5/8" steel strut for framing. The C-Port is UV resistant and suitable for installation on any type of roofing material, including sloped surfaces.
 CS Series Max. Load: 800 LBS per 9.5" length.
 Available in corrosion-resistant stainless steel or aluminum.



Vertical struts for the DSA/ DSAW Series are sold separately.



AIR-PORT UTILITY PADS



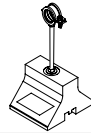
SKU	HEIGHT	WIDTH	LENGTH	WEIGHT
AP6	2.2" (56MM)	5.6" (142MM)	6" (152MM)	2 LBS
AP24	2.2" (56MM)	5.6" (142MM)	24" (610MM)	8 LBS
AP36	2.2" (56MM)	5.6" (142MM)	36" (914MM)	12 LBS

AIR-PORT UTILITY PADS

C-Port Air-Port Utility Pads are made from 100% recycled rubber and designed as a non-penetrating, economical and light-weight support safe for installation on any type of roofing material or other flat surface. Grooved, recessed tray design prevents movement and dampens vibration while providing a solid support for all electrical and HVAC equipment. The proprietary free-flow leg system allows for easy water passage beneath the equipment inhibiting the growth of harmful moss and mould. The UV resistant Air-Port is the perfect long-lasting alternative to roof-damaging heavy concrete curbing and pressure-treated wood blocks.

Max. Load - AP06: 200 LBS, AP24: 650 LBS, AP36: 1000 LBS

CSE-COPPER TUBE & STEEL PIPE SERIES



SKU	HEIGHT TO BOTTOM OF PIPE	WIDTH	LENGTH	WEIGHT
CSE5-10	9.7" (246MM)	6" (152MM)	5" (127MM)	2.9 LBS

Available in corrosion-resistant stainless steel or aluminum.

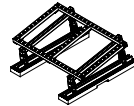
CSE-COPPER TUBE AND STEEL PIPE SERIES

The CSE 5-10 Series is designed for lightweight support of gas and refrigeration pipes at a higher elevation from the roof surface. It is ideal for the support of single piping systems where elevation adjustment is needed. This support is suitable for most types of roofing material or other flat surfaces. The CSE can be ordered with a rubber-lined clamp between 0.25" and 2" diameter.

CSE5-10 Max. Load: 150 LBS.



CP-PLATFORM SERIES



SKU	WIDTH	LENGTH	NUMBER OF LEGS	WEIGHT
CP36-2436	24" (610MM)	36" (914MM)	2	84.2 LBS
CP36-2448	24" (610MM)	48" (1219MM)	2	117.8 LBS
CP36-2472	24" (610MM)	72" (1829MM)	3	125 LBS

CP-PLATFORM SERIES

The CP Series is designed as a non-penetrating, bring-to-level support to create a level platform on sloped surfaces. It is used for air conditioning, air condensing, HVAC, and other electrical units. The free-flowing leg system allows for water passage. Other features include: the prohibiting of moss and mould growth, easy installation, easy movement brackets that are suitable for all types of equipment, and it's adjustable. Consult roofing manufacturer or engineer for roof loading.

CP36-2436 Max. Uniform Load: 2000 LBS.

CP36-2448 Max. Uniform Load: 3000 LBS.

CP36-2472 Max. Uniform Load: 3000 LBS.



Available in corrosion-resistant stainless steel or aluminum.

CP36-2436



PHONE: +1 (204) 786-3334

TOLL FREE: +1 (866) 444-0009

WEBSITE: WWW.C-PORT.NET

AVAILABLE IN:



Updated 2025 visit www.c-port.net for most recent information.

WWW.C-PORT.NET

Note: All measurements may vary by +/- 3%