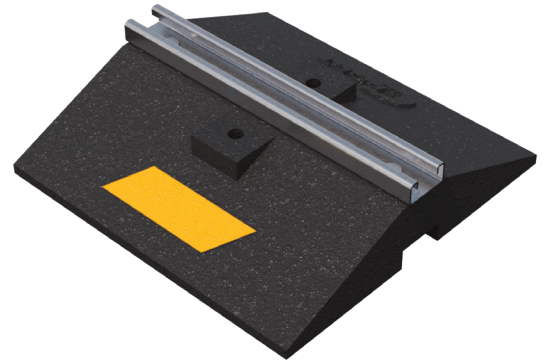


WE SUPPORT YOU!

SCAN FOR V-SPEC
VIDEO SPECIFICATION



CW SERIES



- CW Channel Support Series
- Non-penetrating rooftop support
- Additional stability and load-bearing capacity over the C Series
- Designed to support gas and refrigeration piping, cable trays, electrical conduit, HVAC equipment, and multiple-line rooftop systems
- Suitable for most types of roofing materials or other flat surfaces
- Accepts various straps and/or clamps (sold and supplied by others)
- Strut is available in corrosion-resistant galvanized steel, stainless steel, or aluminum

**LIMITED
LIFETIME WARRANTY**

**MAY QUALIFY FOR
L.E.E.D CREDITS**

**RECOMMENDED SPACING:
REFER TO LOCAL CODE**

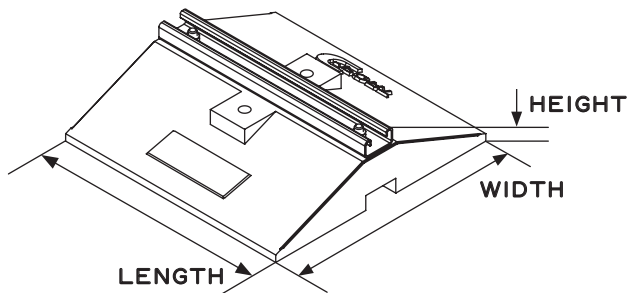


CONSULT WITH A ROOFING CONSULTANT
FOR ALLOWABLE LOADS.



SKU	HEIGHT	WIDTH	LENGTH	WEIGHT	MAX. LOAD
CW12	3.3" (84MM)	12" (305MM)	12" (305MM)	10.4 LBS	1400 LBS PER 12" LENGTH
CW24	3.3" (84MM)	12" (305MM)	24" (610MM)	20.6 LBS	
CW36	3.3" (84MM)	12" (305MM)	36" (914MM)	31.3 LBS	
CW48	3.3" (84MM)	12" (305MM)	48" (1219MM)	41.2 LBS	
CW60	3.3" (84MM)	12" (305MM)	60" (1524MM)	51.5 LBS	
CW72	3.3" (84MM)	12" (305MM)	72" (1829MM)	61.8 LBS	

Note: All measurements may vary by +/- 3%



MATERIALS

BASE (C-PORT CXW):
100% RECYCLED RUBBER, UV RESISTANT

STRUT:
14-GAUGE GALVANIZED STEEL STRUT
(13/16" HIGH)



info@clearline.ca | 1-866-444-0009 | www.c-port.net

Revision Date: 03/2026