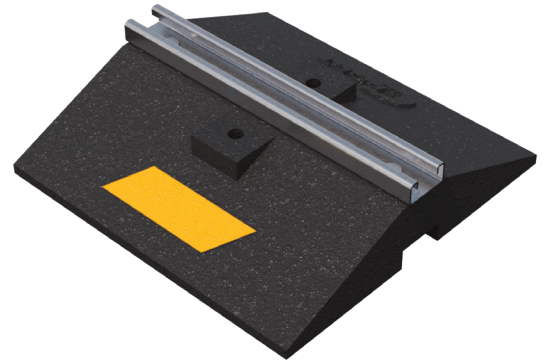


**WE SUPPORT YOU!**

SCAN FOR V-SPEC  
VIDEO SPECIFICATION



# CW SERIES



- CW Channel Support Series
- Non-penetrating rooftop support
- Wide-body base provides increased stability and load-bearing capacity
- Designed to support gas and refrigeration piping, cable trays, electrical conduit, HVAC equipment, and multiple-line rooftop systems
- Suitable for most types of roofing materials or other flat surfaces
- Accepts various straps and/or clamps (sold and supplied by others)
- Strut is available in corrosion-resistant galvanized steel, stainless steel, or aluminum

**LIMITED  
LIFETIME WARRANTY**

**MAY QUALIFY FOR  
L.E.E.D CREDITS**

**RECOMMENDED SPACING:  
REFER TO LOCAL CODE**

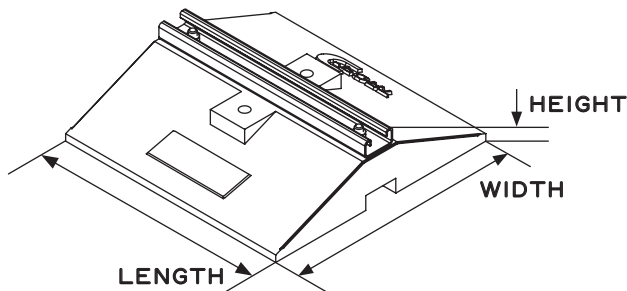


CONSULT WITH A ROOFING CONSULTANT  
FOR ALLOWABLE LOADS.



SKU	HEIGHT	WIDTH	LENGTH	WEIGHT	MAX. LOAD
CW12	3.3" (84MM)	12" (305MM)	12" (305MM)	10.4 LBS	1400 LBS PER 12" LENGTH
CW24	3.3" (84MM)	12" (305MM)	24" (610MM)	20.6 LBS	
CW36	3.3" (84MM)	12" (305MM)	36" (914MM)	31.3 LBS	
CW48	3.3" (84MM)	12" (305MM)	48" (1219MM)	41.2 LBS	
CW60	3.3" (84MM)	12" (305MM)	60" (1524MM)	51.5 LBS	
CW72	3.3" (84MM)	12" (305MM)	72" (1829MM)	61.8 LBS	

**Note:** All measurements may vary by +/- 3%



### MATERIALS

**BASE (C-PORT CXW):**  
100% RECYCLED RUBBER, UV RESISTANT

**STRUT:**  
14-GAUGE GALVANIZED STEEL STRUT  
(13/16" HIGH)



**Clearline**  
TECHNOLOGIES

info@clearline.ca

1-866-444-0009

www.c-port.net

Revision Date: 03/2026