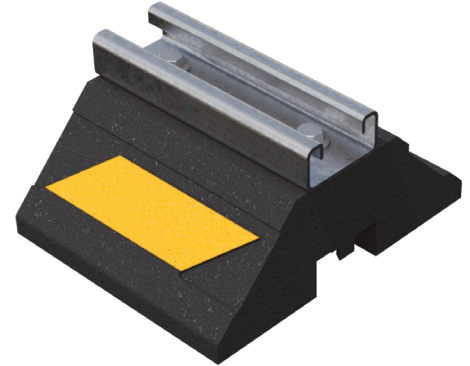


WE SUPPORT YOU!

SCAN FOR V-SPEC
VIDEO SPECIFICATION



CH5 SERIES



- CH5 Channel Support Series
- Non-penetrating rooftop support
- Smallest C-Port strut channel support
- Designed to support small conduit and piping across solar, telecom, and a wide range of rooftop applications
- Suitable for most types of roofing materials or other flat surfaces
- Accepts various straps and/or clamps (sold and supplied by others)
- Strut is available in corrosion-resistant galvanized steel, stainless steel, or aluminum

LIMITED
LIFETIME WARRANTY

MAY QUALIFY FOR
L.E.E.D CREDITS

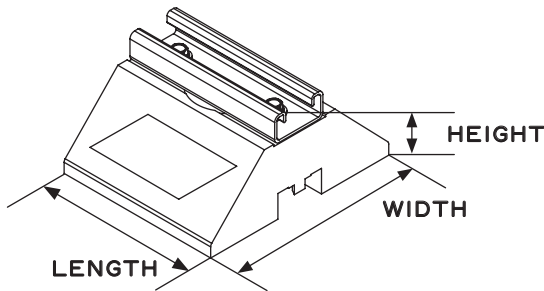
RECOMMENDED SPACING:
REFER TO LOCAL CODE

 CONSULT WITH A ROOFING CONSULTANT FOR ALLOWABLE LOADS.



SKU	HEIGHT	WIDTH	LENGTH	WEIGHT	MAX. LOAD
CH5	3" (76MM)	6" (152MM)	5" (127MM)	2.3 LBS	300 LBS

Note: All measurements may vary by +/- 3%



MATERIALS

BASE (C-PORT CXH):
100% RECYCLED RUBBER, UV RESISTANT

STRUT:
14-GAUGE GALVANIZED STEEL STRUT
(13/16" HIGH)



info@clearline.ca | 1-866-444-0009 | www.c-port.net

Revision Date: 03/2026