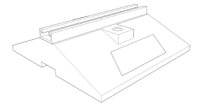




Rooftop Support Systems
by Clearline Technologies

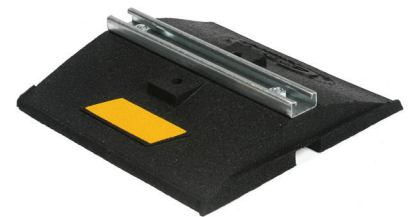
CW Series



The CW Series is our economical wide body channel support. It offers additional stability and load-bearing capacity over our C Series. The CW series is designed to support gas and refrigeration piping systems, cable trays, electrical conduit, or hundreds of other applications.

Material

Base – 100% Recycled Rubber, UV Resistant
Strut – 14 gauge Galvanized Channel strut (13/16" high)



Available in corrosion resistant stainless steel or aluminum.

Max Load 1000 lbs
Warranty 10 years
Recommended Spacing Refer to local code

May qualify for L.E.E.D. credits

SKU	HEIGHT	WIDTH	LENGTH	WEIGHT
CW12	3 5/16" (84mm)	12" (305mm)	12" (305mm)	9.5 lbs
CW24	3 5/16" (84mm)	12" (305mm)	24" (610mm)	19 lbs
CW36	3 5/16" (84mm)	12" (305mm)	36" (914mm)	28.5 lbs
CW48	3 5/16" (84mm)	12" (305mm)	48" (1219mm)	38 lbs
CW60	3 5/16" (84mm)	12" (305mm)	60" (1524mm)	47.5 lbs
CW72	3 5/16" (84mm)	12" (305mm)	72" (1829mm)	57 lbs

WWW.C-PORT.NET

1-866-444-0009

