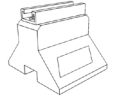




Rooftop Support Systems
by Clearline Technologies

C5-B



The C5-B comes on our CXM-B Mini-Port base and includes a channel strut for economical support of smaller pipes, conduit, or hundreds of other types of lines.

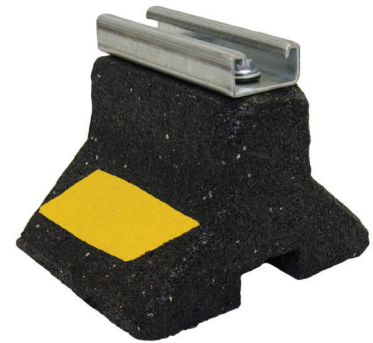
Available in corrosion resistant stainless steel or aluminum.

Material

Base – 100% Recycled Rubber, UV Resistant

Strut – 14 gauge Galvanized Channel strut (13/16" high)

- Max Load** 300 lbs
- Warranty** 10 years
- Recommended Spacing** Refer to local code
- May qualify for L.E.E.D. credits**



SKU	HEIGHT	WIDTH	LENGTH	WEIGHT
C5-B	4 7/8" (124mm)	6" (152mm)	5" (127mm)	3.32 lbs

WWW.C-PORT.NET

1-866-444-0009

