

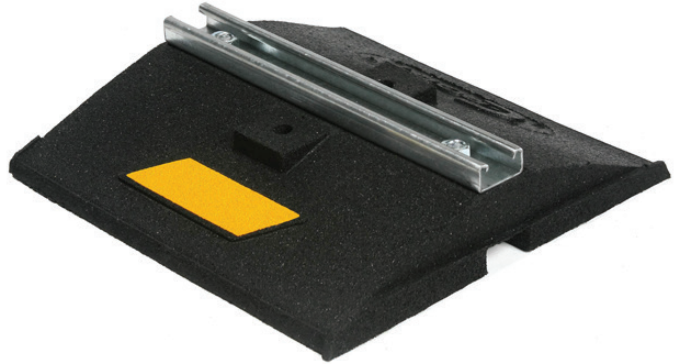


Looking To Purchase?

Phone-866-444-0009
 Email-Sales@Clearline.ca
 www.c-port.net

CW Series

The CW Series is our economical wide body channel support. It offers additional stability and load-bearing capacity over our C Series. The CW series is designed to support gas and refrigeration piping systems, cable trays, electrical conduit, or hundreds of other applications.



Available in corrosion resistant stainless steel or aluminum.

Material - Base - 100% recycled rubber, UV resistant
 - Strut - 14 gauge galvanized channel strut (13/16" high)

Warranty - 10 years

Recommended Spacing - Refer to local code

May qualify for L.E.E.D. credits

SKU	HEIGHT	WIDTH	LENGTH	WEIGHT	MAX LOAD
CW12	35/16" (84mm)	12" (305mm)	12" (305mm)	9.5 lbs	1200 lbs
CW24	35/16" (84mm)	12" (305mm)	24" (610mm)	19 lbs	2400 lbs
CW36	35/16" (84mm)	12" (305mm)	36" (914mm)	28.5 lbs	3600 lbs
CW48	35/16" (84mm)	12" (305mm)	48" (1219mm)	38 lbs	4800 lbs
CW60	35/16" (84mm)	12" (305mm)	60" (1524mm)	47.5 lbs	6000 lbs
CW72	35/16" (84mm)	12" (305mm)	72" (1829mm)	57 lbs	7200 lbs

Strut and pipe clamps also available.