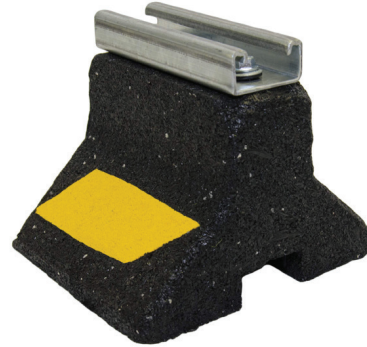


We Support You

C5

The C5 comes on our CXM Mini-Port base and includes a channel strut for economical support of smaller pipes, conduit, or hundreds of other types of lines.

Available in corrosion resistant stainless steel or aluminum.



Material - Base - 100% recycled rubber, UV resistant

- Strut - 14 gauge galvanized channel strut (13/16" high)

Warranty - 10 years

Recommended Spacing - Refer to local code

May qualify for L.E.E.D. credits

SKU	HEIGHT	WIDTH	LENGTH	WEIGHT	MAX LOAD
C5	47/8" (124mm)	6" (152mm)	5" (127mm)	3.32 lbs	300 lbs

Strut and pipe clamps also available.

Looking to purchase?
 Phone-866-444-0009
 Email-Sales@Clearline.ca
 www.c-port.net